

DESCOMPLICANDO AS LESÕES NEOPLÁSICAS DA BASE DO CRÂNIO: UMA ABORDAGEM COMPARTIMENTAL

- Superfície exocraniana - em contato com seios paranasais e cavidades nasais, órbitas e diversos espaços cervicais (mastigador, parotídeo, parafaríngeo, mucosofaríngeo, carotídeo, retrofaríngeo e perivertebral)
- Superfície endocraniana - em contato com o cérebro, cisternas, nervos e vasos intracranianos. Esta pode ser compartimentalizada da seguintes forma:

FOSSA ANTERIOR

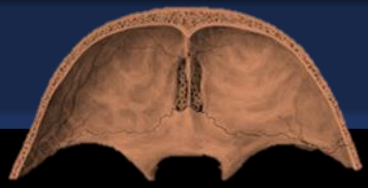
- Assoalho da fossa craniana anterior (placa orbital do osso frontal + placa cribriforme + teto do seio etmoidal + plano esfenoidal + asa menor do esfenoide)
- Forame cego
- Forames da placa cribriforme

FOSSA MÉDIA / CENTRAL

- Assoalho da fossa craniana média (base e asa maior do esfenoide + osso temporal)
- Sela turca e tubérculo
- Processo clinóide anterior
- Forames redondo, oval, espinhoso e lácero
- Canais óptico, vidiano e carotídeo
- Fissuras orbitárias superior e inferior

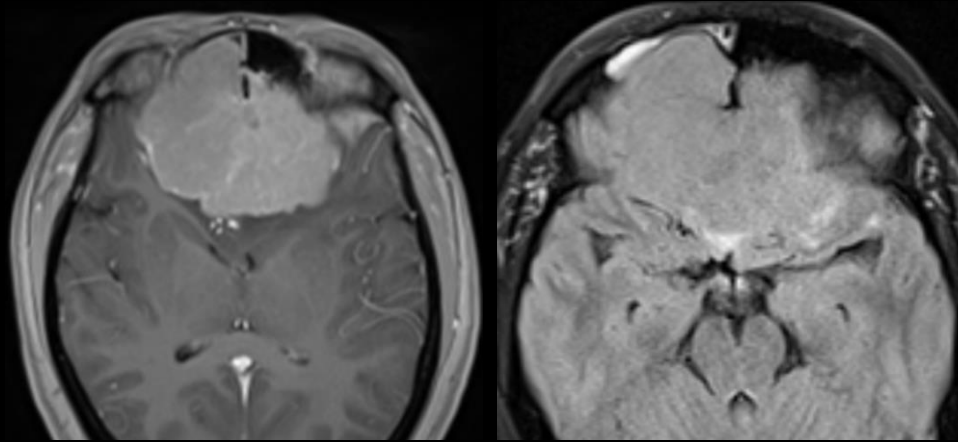
FOSSA POSTERIOR

- Assoalho da fossa craniana posterior (ossos temporal + occipital)
- Osso occipital (parte basilar – clivo e baseoccípito; condilar; e escamosa)
- Conduto auditivo interno
- Forames jugular, estilomastoideo e magno
- Canal do hipoglosso

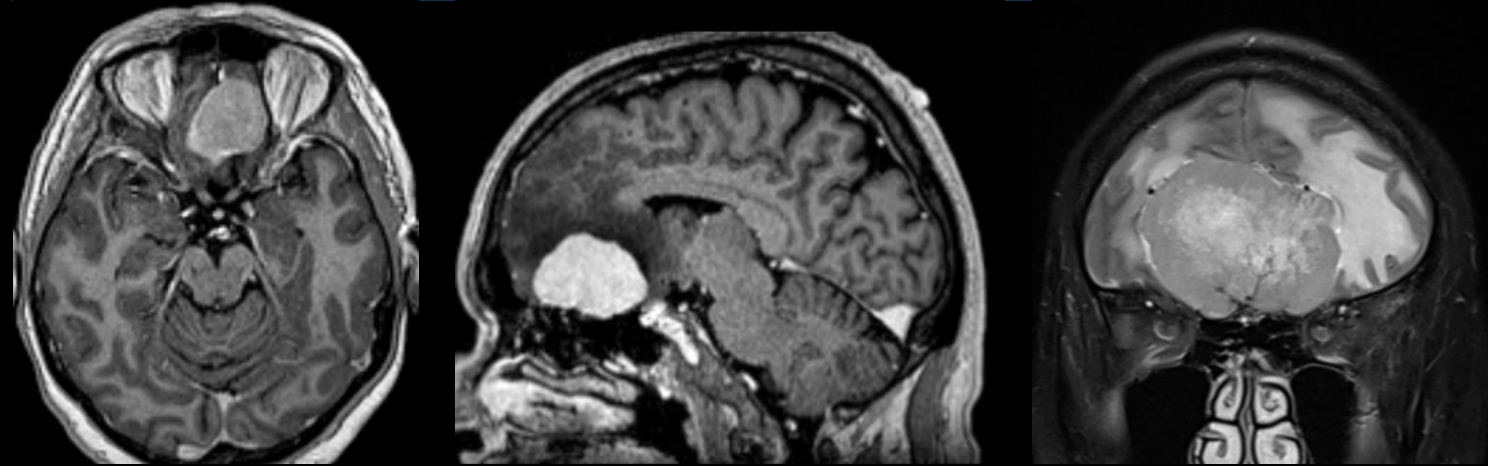


FOSSA ANTERIOR

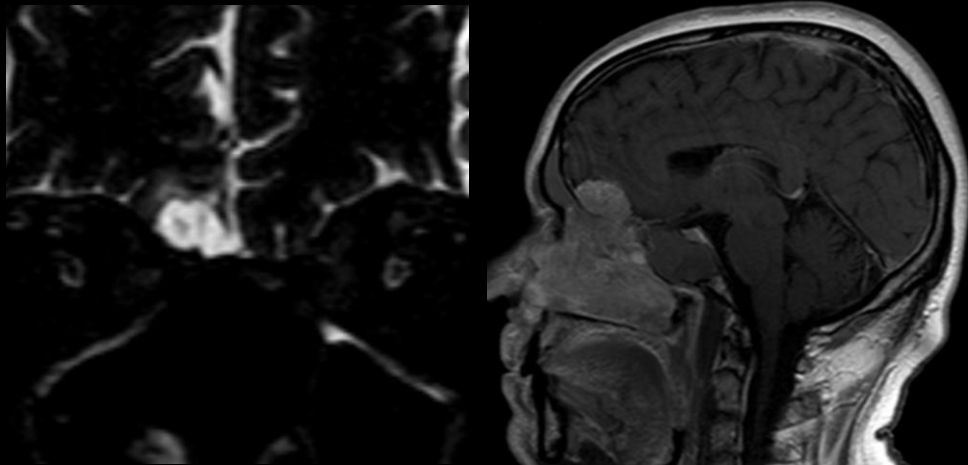
TU FIBROSO SOLITÁRIO



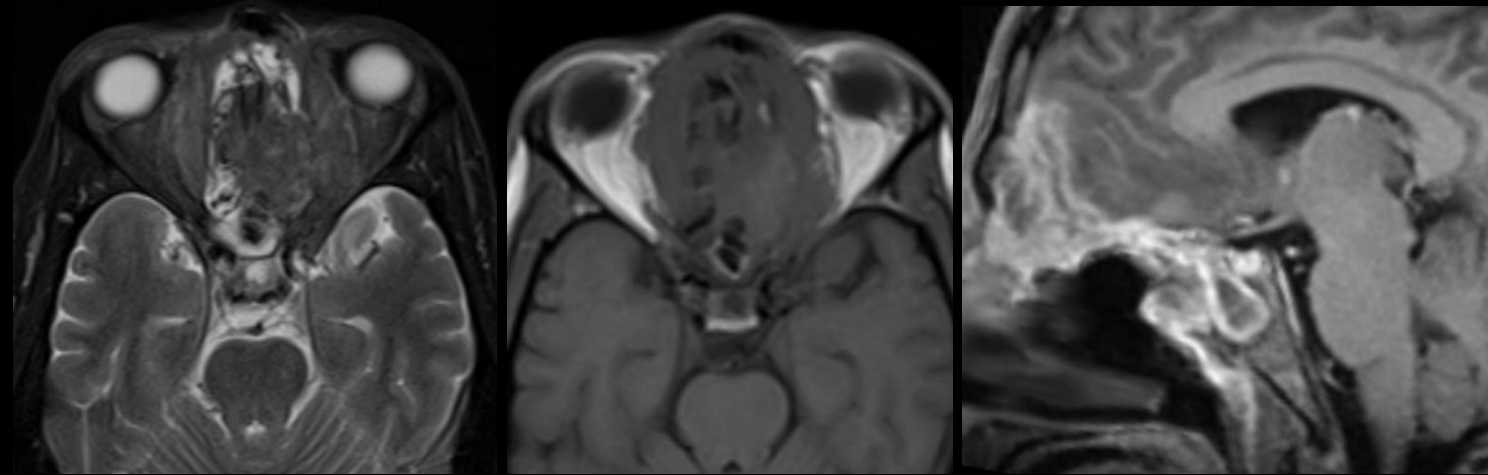
MENINGIOMA



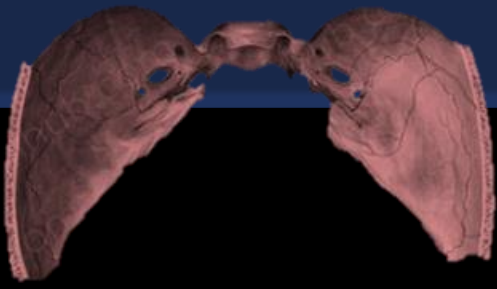
ESTESIONEUROBLASTOMA



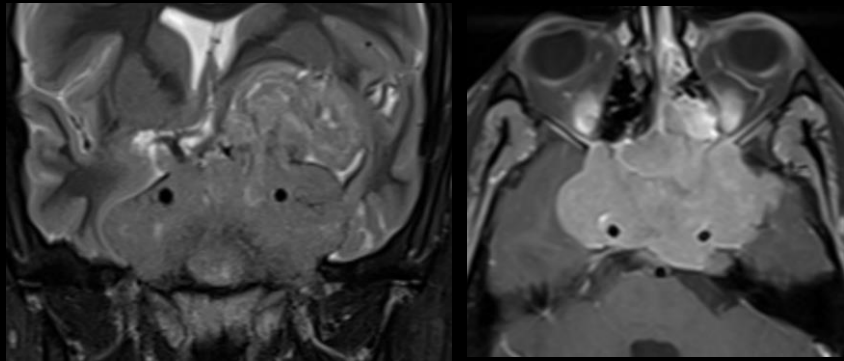
CARCINOMA ESPINOCELULAR



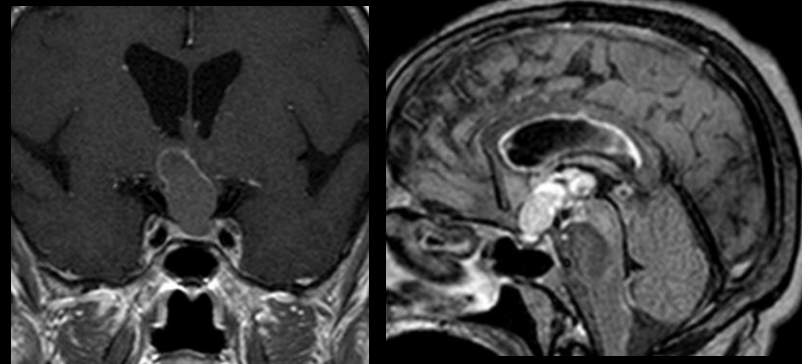
FOSSA MÉDIA



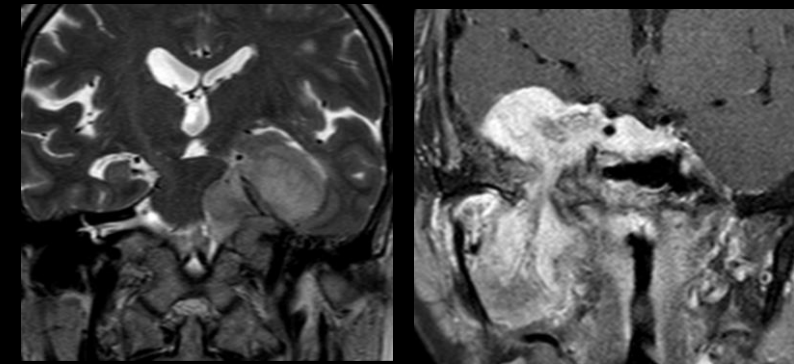
MACROADENOMA INVASIVO DE HIPÓFISE



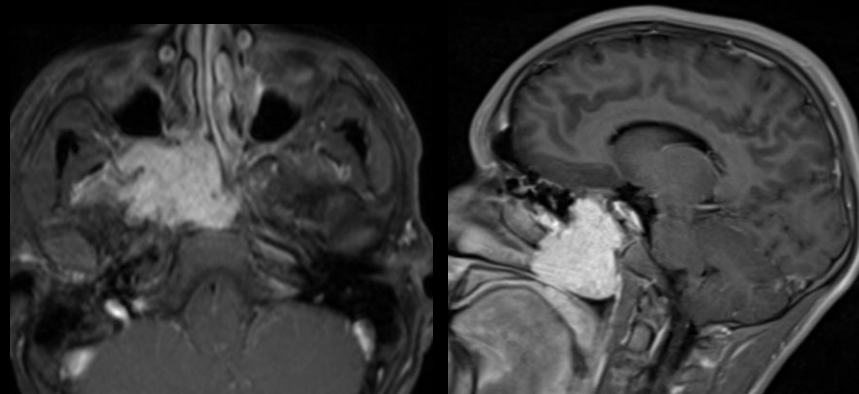
CRANIOFARINGIOMA



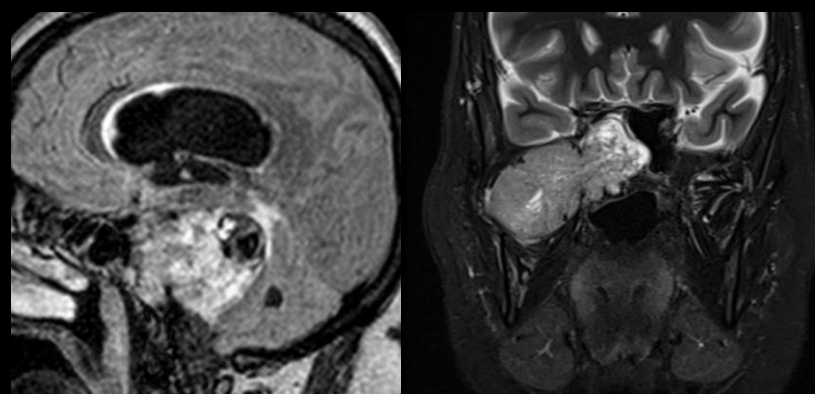
MENINGIOMA



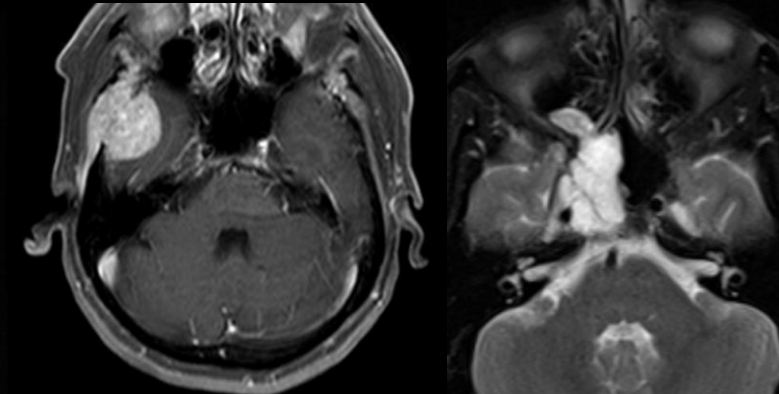
NASOANGIOFIBROMA JUVENIL

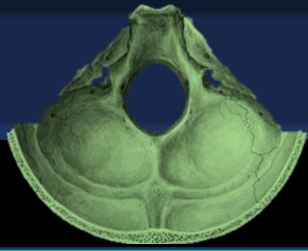


SCHWANNOMA



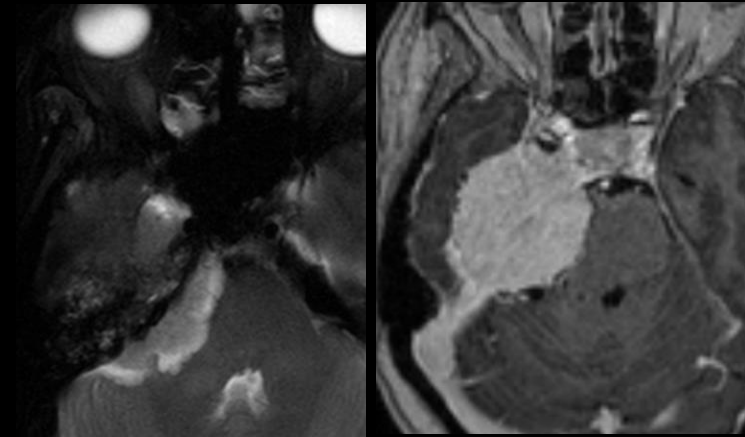
METÁSTASE



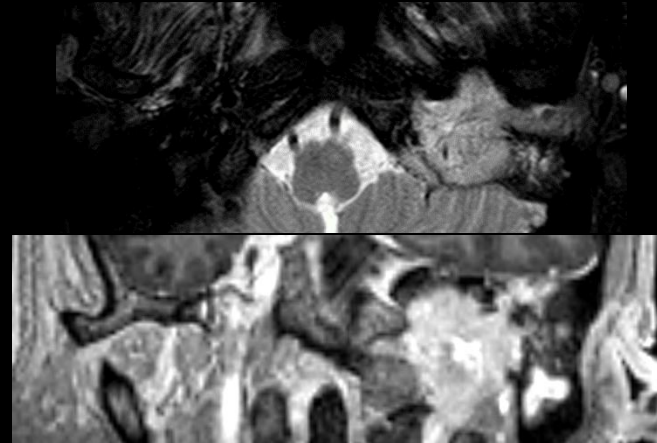


FOSSA POSTERIOR

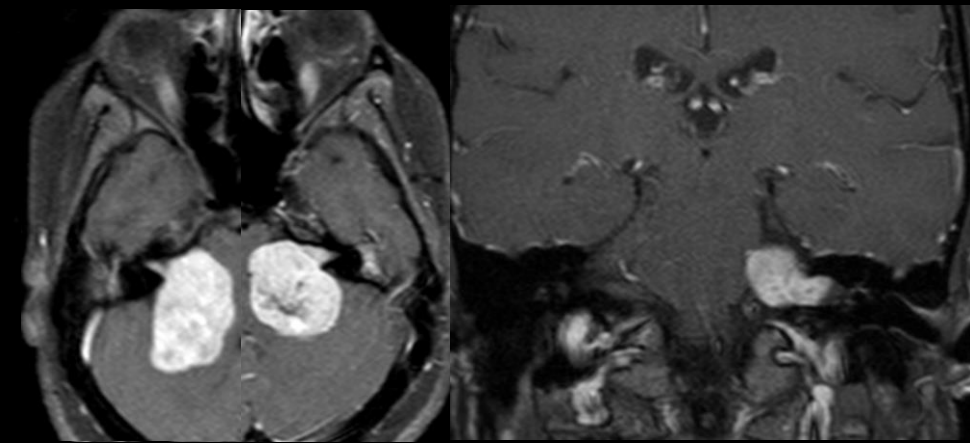
MENINGIOMA



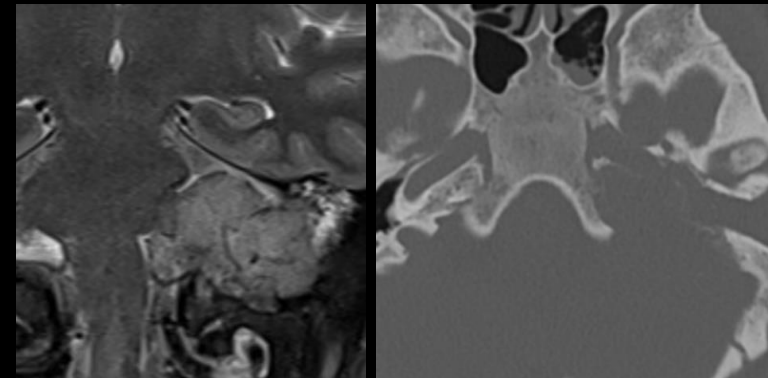
PARAGANGLIOMA FORAME JUGULAR



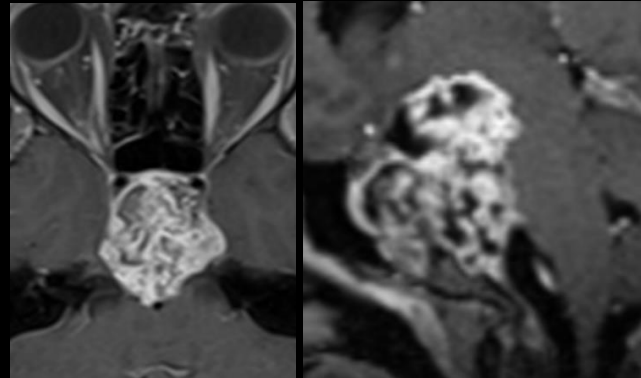
SCHWANNOMA



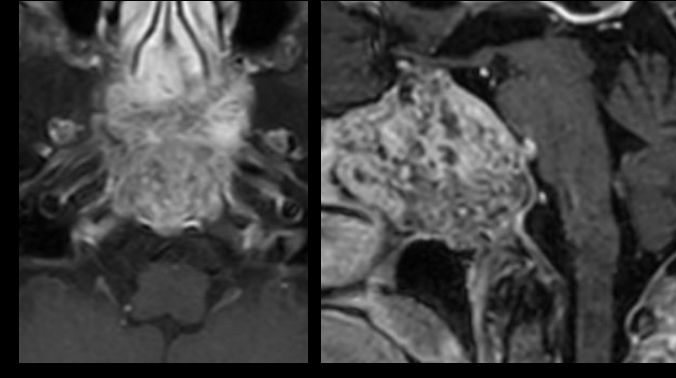
PARAGANGLIOMA JUGULAR



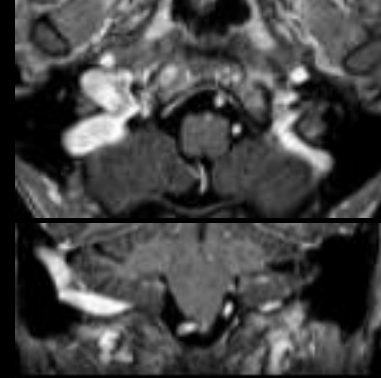
CONDROSSARCOMA



CORDOMA



METÁSTASE



FLUXOGRAMA

