

Figura 1

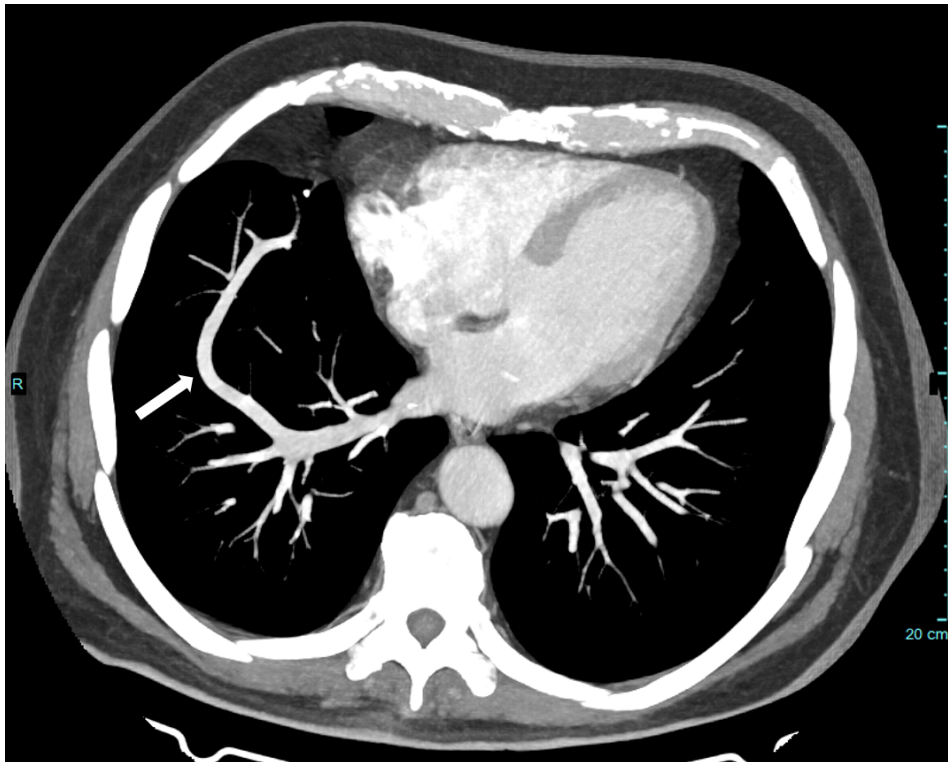


Figura 2



Figuras 1 e 2: Cortes axiais de tomografia computadorizada de tórax com contraste, ao nível do lobo pulmonar inferior direito, com destaque para veia pulmonar inferior ipsilateral de trajeto intrapulmonar curvilíneo anormal (seta branca).

Figura 3

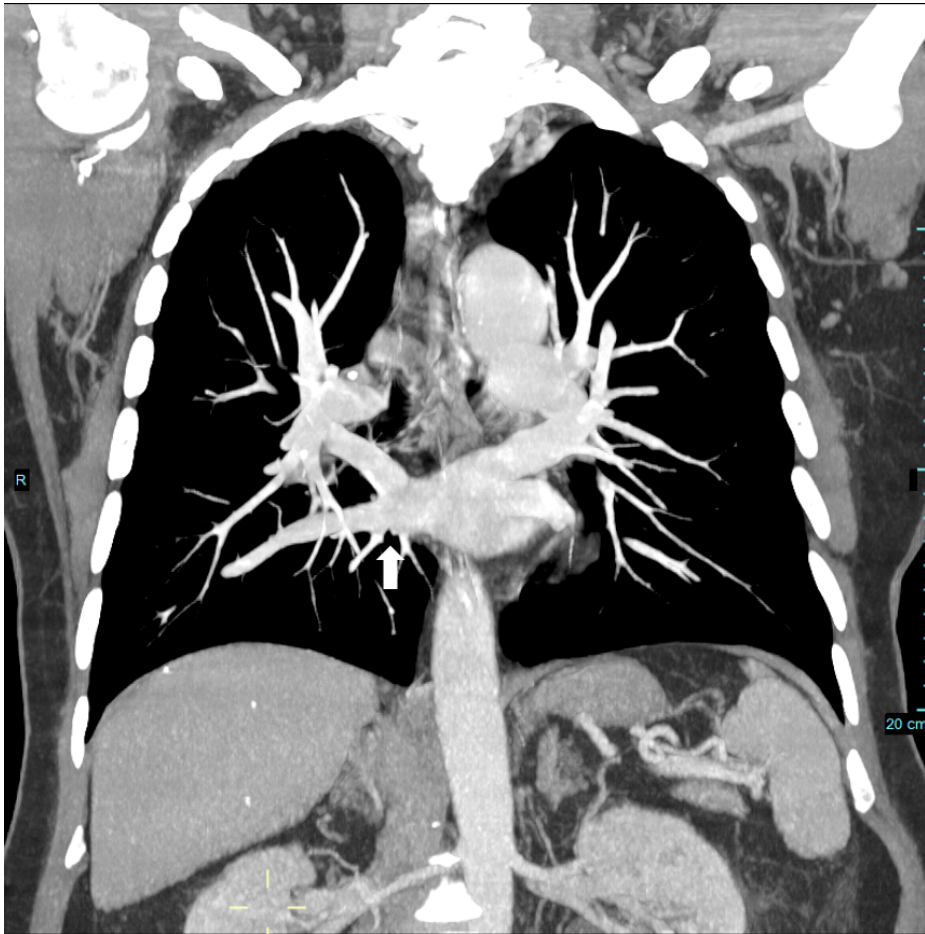
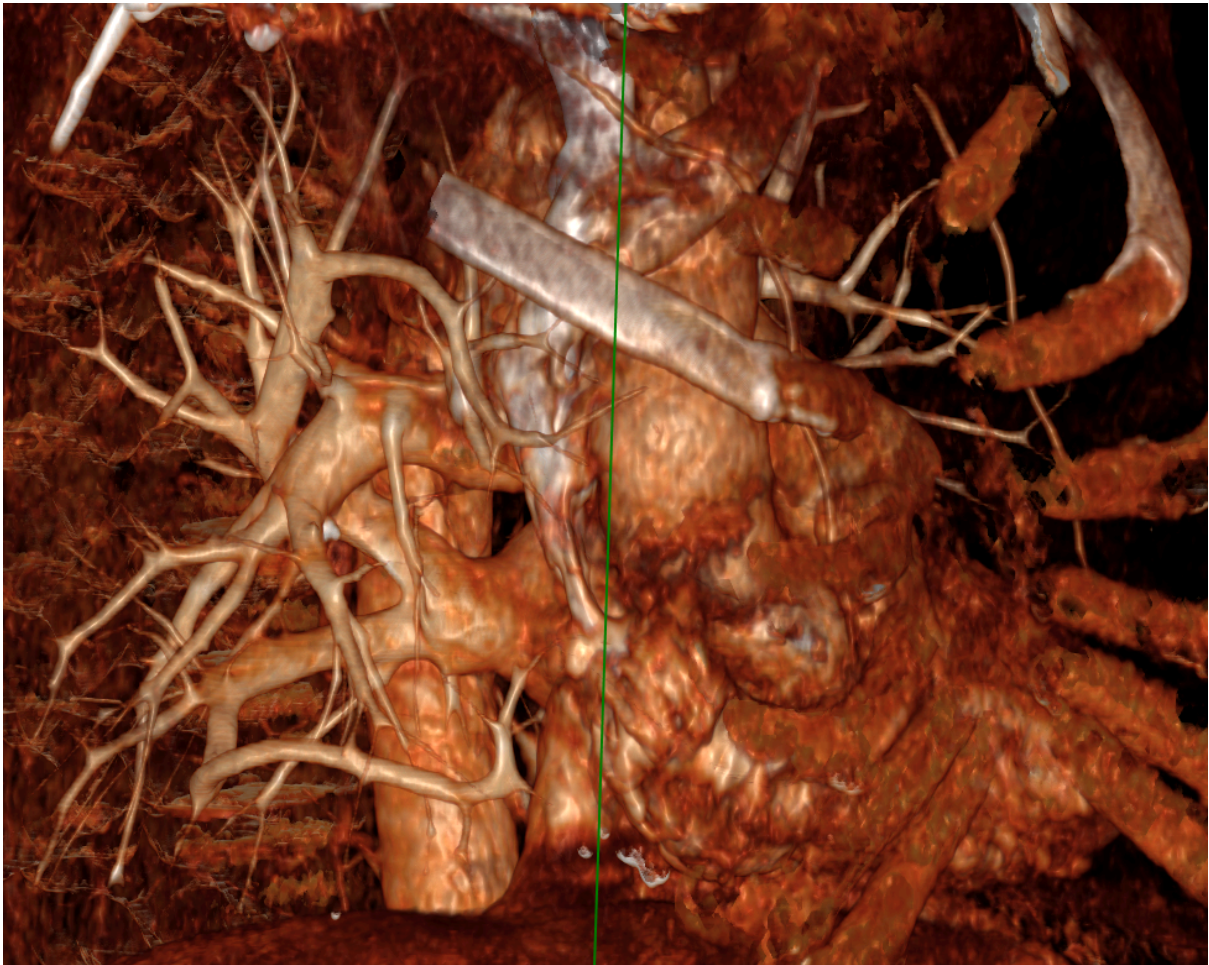


Figura 4

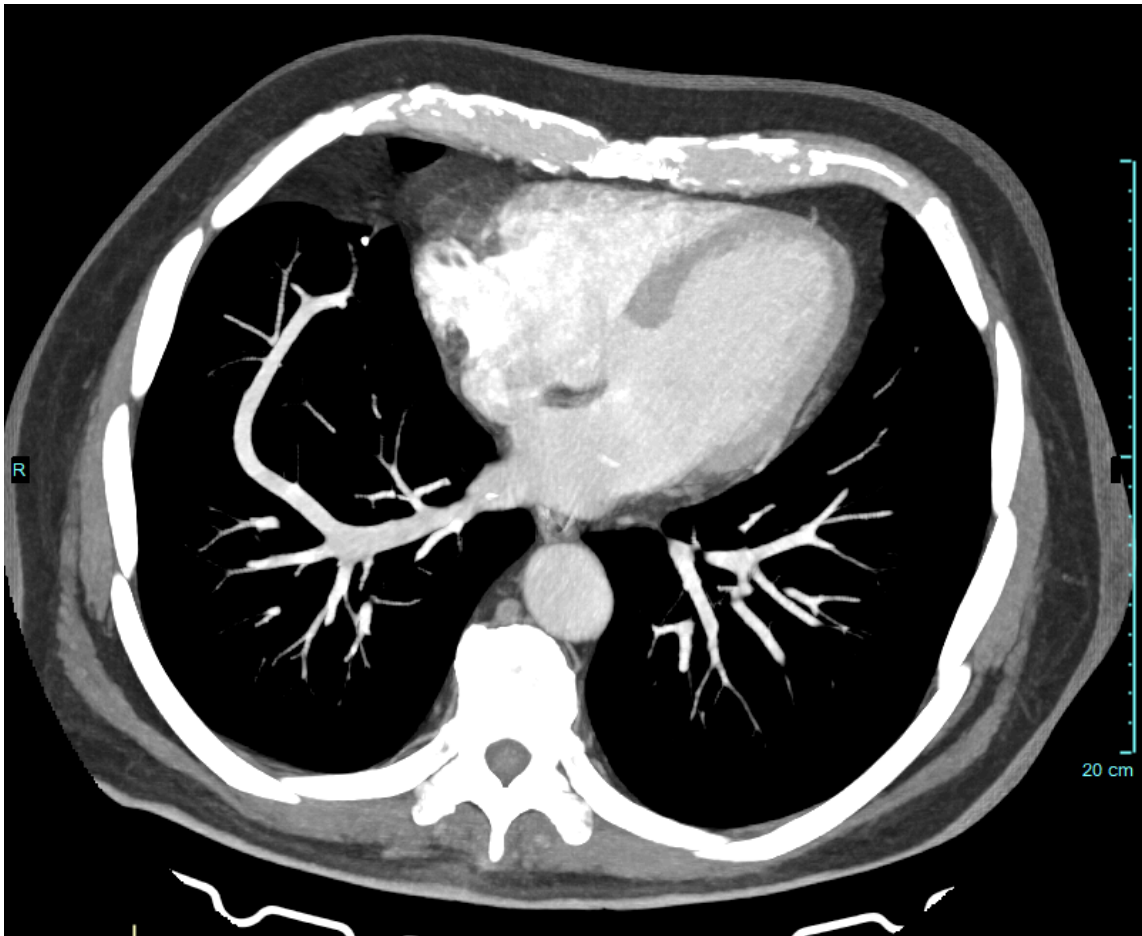


Figura 5



Figuras 3, 4 e 5: Cortes coronais (3 e 4) e imagem tridimensional reformatada (5) de tomografia computadorizada de tórax com contraste, onde se observa veia pulmonar superior direita de percurso posterior ao brônquio fonte unindo-se à veia pulmonar inferior ipsilateral, que apresenta trajeto intrapulmonar anômalo, em um tronco comum que drena para o átrio esquerdo (seta branca), achados característicos da “*meandering pulmonary vein*”.

IMAGEM EXTRA (SEM SETA)



EXEMPLOS:

B. Contrast-enhanced chest CT coronal images (upper) show a tortuous vascular structure in the right upper lobe (arrows) emptying into the left atrium via the right superior pulmonary vein (asterisk) (lower).

C. A three-dimensional reformatted volume-rendered image shows the aberrant anomalous vein (arrows) with a tortuous course draining into the left atrium.

Chest CT images revealing an unusual vascular anomaly draining the left upper lobe (arrow in B) and joining the left inferior pulmonary vein (arrow in C) before merging into the left atrium. D. 3D volume rendered image showing an enlarged aberrant anomalous vein (arrows) courses tortuously to posterior direction and drains into the left atrium.