

Figure 1- 18-year-old man with slowly progressive weakness and atrophy of hands. Nonflexion sagittal T2-weighted MR image shows focal cord atrophy at the C5 to C7 levels.

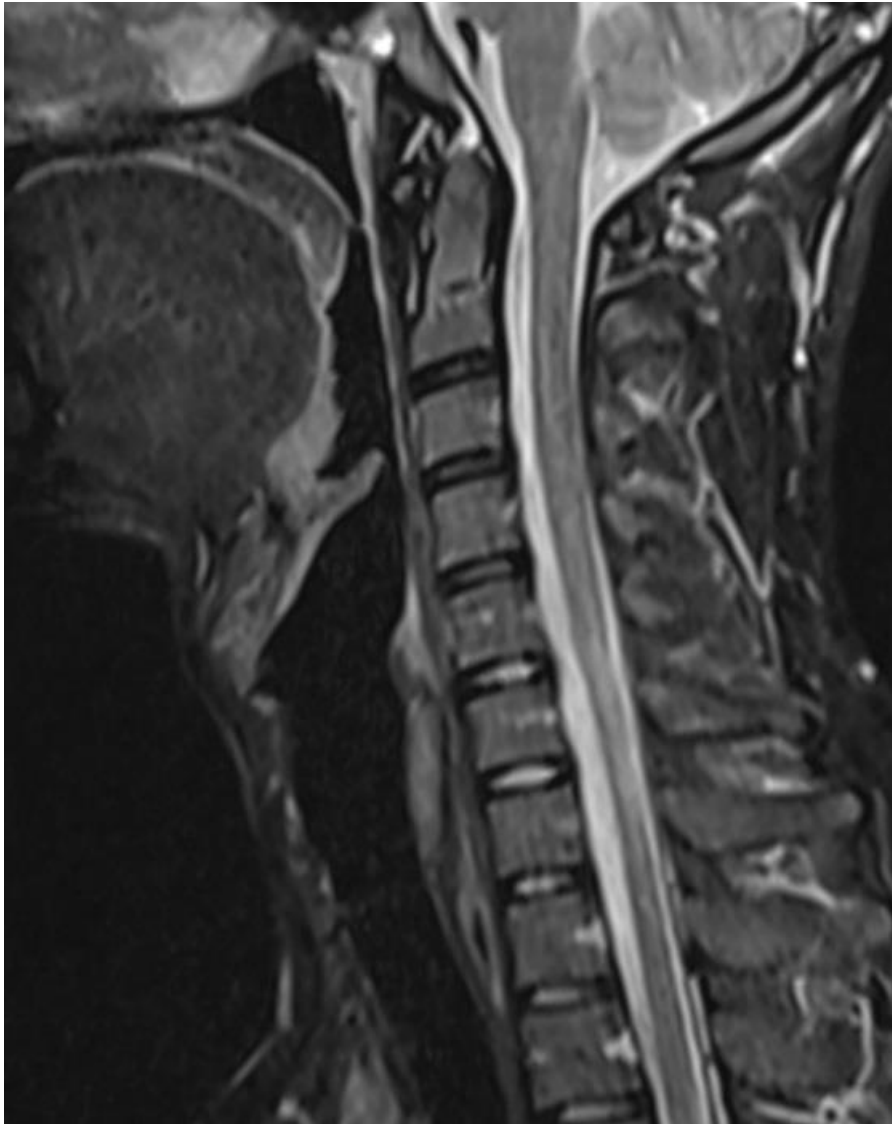


Figure 2. Neutral-position MR images Short tau inversion recovery (STIR), shows localized cord atrophy at C5 and C7 levels, and faint noncompressed intramedullary high signal intensity at C5-C7.

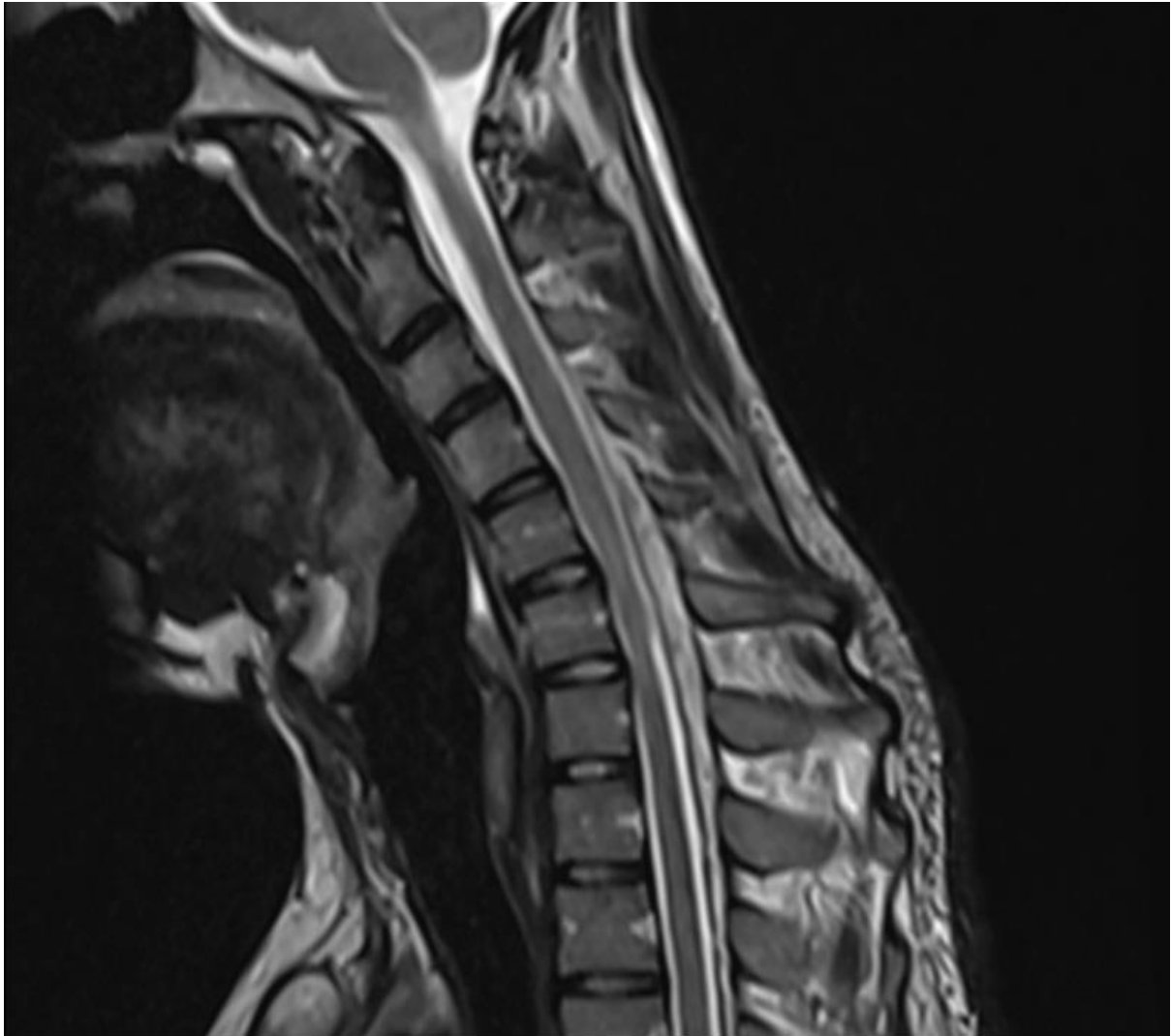


Figure 3. Flexion sagittal T2-weighted MR image shows forward displacement of the posterior wall of the dural canal below C3, which causes flattening of the lower cervical cord.